

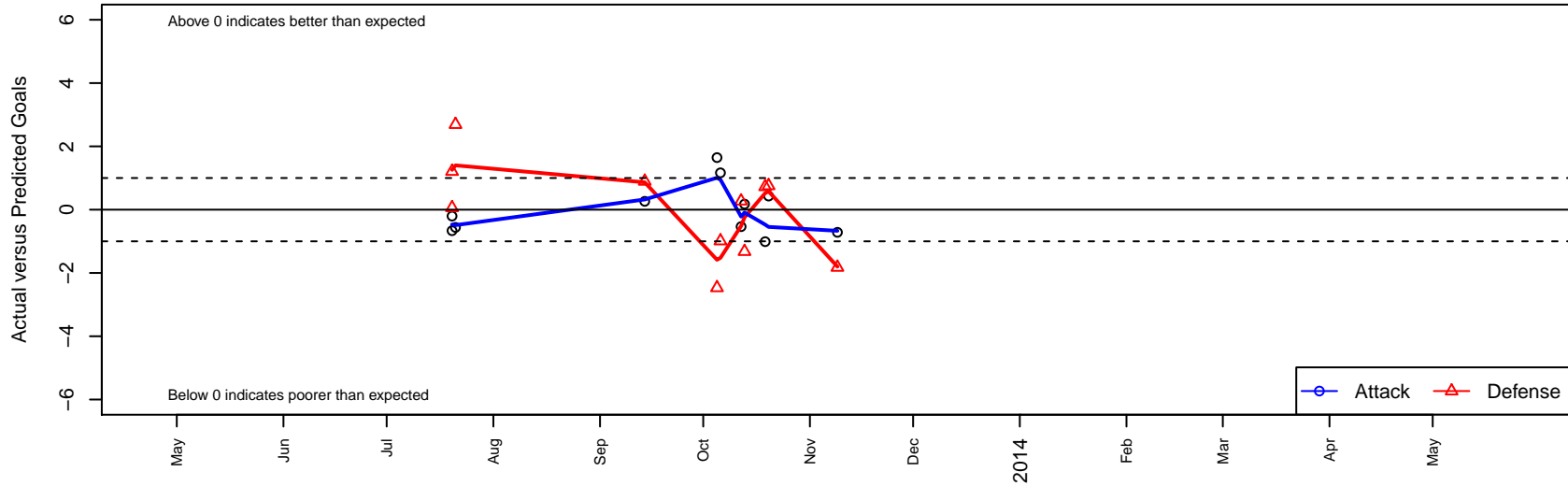
Heritage SC Crush G00

Heritage SC
 , CAN
 G00 total strength=1136
 attack=6.37 defense=1.62
 alt names used:
 HERITAGE SC CRUSH (CAN)
 Heritage Soccer Club Crush 00 G

Venues played:
 Pats Cup GU13 Mercurial U13
 NorCal Premier F11 – Region 3–4 U13



Heritage SC Crush G00
 Dots are actual minus expected GF (blue circles) and GA (red triangles).
 Blue line is smoothed change in attack strength. Red is smoothed change in defense strength.



	date	home		away		venue	pred.home	pred.away
10663	2013-11-09	Heritage SC Crush G00	2	San Ramon 01 Azuri G00	3	NorCal Premier F11 – Region 3-4 U13	2.72	1.18
10311	2013-10-20	Livermore Fusion SC Maroon G00	1	Heritage SC Crush G00	2	NorCal Premier F11 – Region 3-4 U13	1.75	1.57
10208	2013-10-19	Castro Valley United Green G00	2	Heritage SC Crush G00	1	NorCal Premier F11 – Region 3-4 U13	2.72	2.01
10139	2013-10-13	Heritage SC Crush G00	2	Lamorinda United SC Navy G00	6	NorCal Premier F11 – Region 3-4 U13	1.82	4.68
10020	2013-10-12	Heritage SC Crush G00	0	Diablo FC G00	2	NorCal Premier F11 – Region 3-4 U13	0.54	2.27
9939	2013-10-06	EBU Bay Oaks Botafogo G00	3	Heritage SC Crush G00	3	NorCal Premier F11 – Region 3-4 U13	2.01	1.84
9833	2013-10-05	Tahuichi FC G00	5	Heritage SC Crush G00	4	NorCal Premier F11 – Region 3-4 U13	2.53	2.35
9348	2013-09-14	Mill Valley 01 Rockers G00	1	Heritage SC Crush G00	2	NorCal Premier F11 – Region 3-4 U13	1.90	1.74
8444	2013-07-21	United FC Black G00	2	Heritage SC Crush G00	0	Pats Cup GU13 Mercurial U13	4.69	0.56
8405	2013-07-20	Heritage SC Crush G00	2	Manhattan Beach Sand and Surf G00	0	Pats Cup GU13 Mercurial U13	2.20	1.21
8406	2013-07-20	So Cal Blues Kale G00	6	Heritage SC Crush G00	0	Pats Cup GU13 Mercurial U13	6.06	0.66